

Visitor guide to Wythenshawe Community Housing Group

Wythenshawe House, 8 Poundswick Lane Wythenshawe M22 9TA



Travel options

[What3words](#) is a website that has split the world into small 3-metre squares, each with a unique three-word address. It's a simple way to find and share precise locations. If you use the words below on the site, it will pinpoint exactly where our office is.

What3words: ///torn.former.bland

Trams / Metrolink

There are two tram stops convenient for the office. Both are approx. 0.2 miles in distance / a 5-minute walk:

- Crossacres is on Brownley Road. Via main roads you can walk down Brownley Road and turn into Poundswick Lane. Alternatively, you can walk through the housing estate via Sandycroft Avenue.
- Wythenshawe Town Centre stop is at the Wythenshawe Interchange, on Poundswick Lane.

Bus

- Most local bus services stop at the Wythenshawe Interchange, on Poundswick Lane; approx. 0.2 miles in distance / a 5-minute walk.
- Some bus services also stop near the Fire Station on Poundswick Lane. It's a bit closer to the office than the Interchange. If you're catching the number 11, that one goes down Woodhouse Lane. You can ask the driver to stop anywhere along the way.

Train

- The closest train station is Manchester Airport. From there you can get the Metrolink, bus or taxi to the office.

Car

- Parking is available at the back of the building for colleagues, customers and visitors; access via Woodhouse Lane. The entrance gate closes at 5pm. Drive slowly towards the gate and it will open when your front wheels move over the speed bump.
- Colleagues walking or cycling and using the gate at the back of the building before 8am or after 5pm will need to ring Assure24 to be let out.
- We have three designated accessible parking spaces, two of which are electric vehicle charging bays. There are six additional electric vehicle spaces.

Entering the building

Front entrance on Poundswick Lane

The front entrance to the office has a set of automatic doors with level access to the reception area.



Back entrance on Woodhouse Lane

The back entrance has an automatic swing door. Colleagues can use their key pass to enter, while visitors can use the intercom to alert reception, who'll be happy to let you in.



Inside the building

Reception

The reception is on the ground floor, between the front and back entrances. The desk has a lowered section for wheelchair users and stays open until the building closes. If you need a portable hearing loop, just ask a member of the reception team, they'll be happy to help.

We're open Monday to Friday, 8am-6pm. On Wednesdays, Reception is closed from 10.30-11.30am. If you have an appointment during this time, please wait at the back entrance and a colleague will let you in.

(Photo on next page)



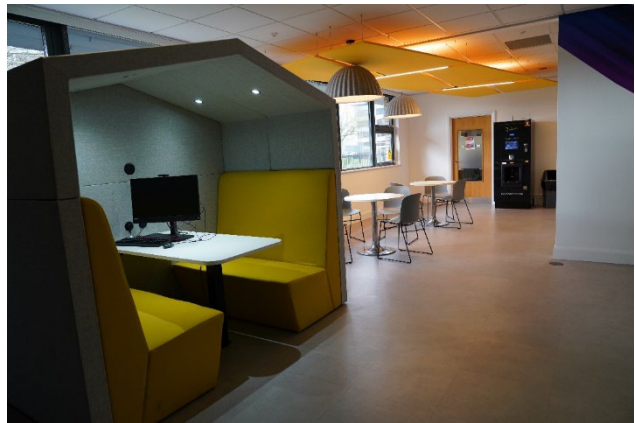
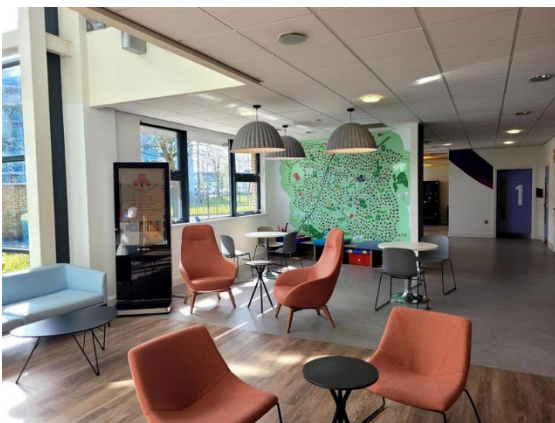
Wythenshawe
Community Housing Group



Seated reception area

There is a variety of seats in the reception area, a sofa, high back chairs and lower chairs as well as table of different heights.

There is a space available for children to play, read and do some colouring. Around the corner there is a 'pod' for private conversations which has two bench seats. There is also a 10p coffee machine available to those waiting.



Meeting rooms

There are four meeting rooms on the ground floor for meetings with customers. The first two have a sofa and two low chairs without armrests, but extra supportive chairs can be added if needed. The other two rooms have a table with two chairs on each side, a planter and a computer screen.

All rooms have temperature control, level access, and overhead fluorescent lights that turn on automatically when you enter.



Meeting rooms for visitors

From reception, you'll enter through the door to the right of the reception desk, leading to an area with a lift and a defibrillator

Lifts

The lift provides access to both upper floors. All lifts are wheelchair accessible, with controls at an accessible height and built-in audio assistance.

Accessible toilets

Each floor has clearly signposted accessible toilets, located on the right-hand side. Every accessible toilet includes an emergency pull cord, a fold-down rail, and a soap dispenser and sink within easy reach.

We also recognise colleagues may to use the accessible bathrooms to wash before prayer. Mops and buckets are provided in each accessible bathroom in case of water spillage.

The top floor accessible bathroom in Wythenshawe House, which is closest to the wellbeing room has been modified to be larger for ease of washing.

Emergency evacuation procedures

In the event of a fire, each stairwell has a secure refuge point for people with access needs.

Wythenshawe Works
307 Greenwood Rd, Wythenshawe, Manchester M22 9HD



Travel options

What3words: ///torn.former.bland

- If using Google Maps, this office will show up as Jewson's Partnership solutions Wythenshawe.

Trams / Metrolink

- The nearest tram stop is a 9-minute walk away at Martinscroft.

Bus

- The nearest bus stop is Hollyhedge Road on both sides of the road.

Train

- The closest train station is Manchester Airport. From there you can get the Metrolink, bus or taxi to the office.

Car

- Parking is limited with the car park being for colleagues only. There is an accessible parking spot to the right of the back entrance through the car park, and street parking is available along Greenwood Road.

What3words: ///land.dreams.traded

Entering the building

Front entrance

This entrance is on the side of the building, with level access from the pavement. It leads to two sets of automatic doors, which open with a pass card.



Back entrance

Visitors coming from the car park can use the ramp and a pass card to enter the office, with level access into the building.



Inside the building

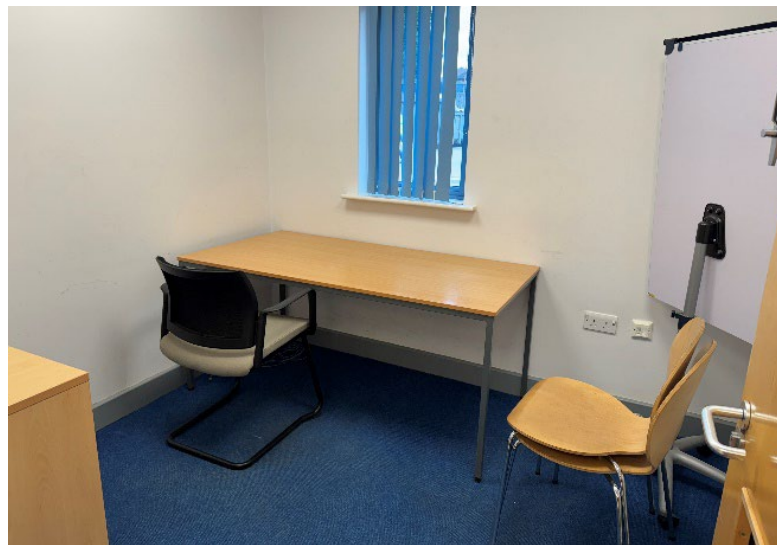
Meeting rooms

There are three meeting rooms on the ground floor. Two of them are larger rooms with tables and chairs, and one is a smaller room for up to two people.

On the first floor, there are three meeting rooms with tables and chairs in them for groups of up to 10 people.



The photo above is Maple room



The photo above is Alder room



The photo above is Willow Suite



The photo above is Oak room



The photo above is Cedar room



The photo above is a non-bookable meeting room

Accessible toilets

There is an accessible toilet both upstairs and downstairs, and they both have a pull cord in each.

Lifts

There is a lift to the left of the back entrance to the building which goes to the first floor.

Emergency evacuation procedures

In the event of a fire, each stairwell has a secure refuge point for people with access needs.

If anything is incorrect in this guide, or you'd like to suggest improvements or additions, please email inclusionanddiversity@wchg.org.uk